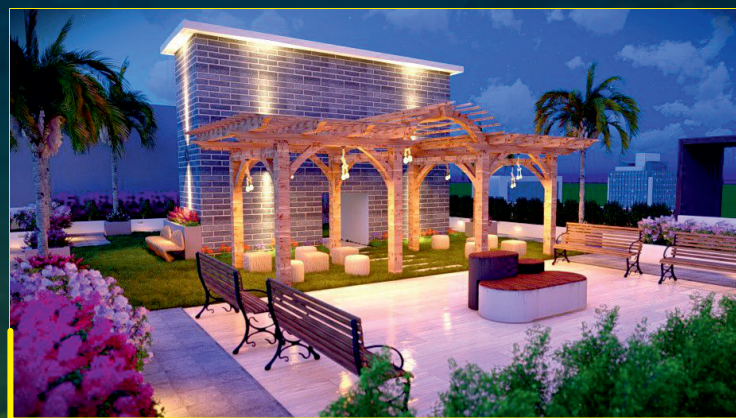




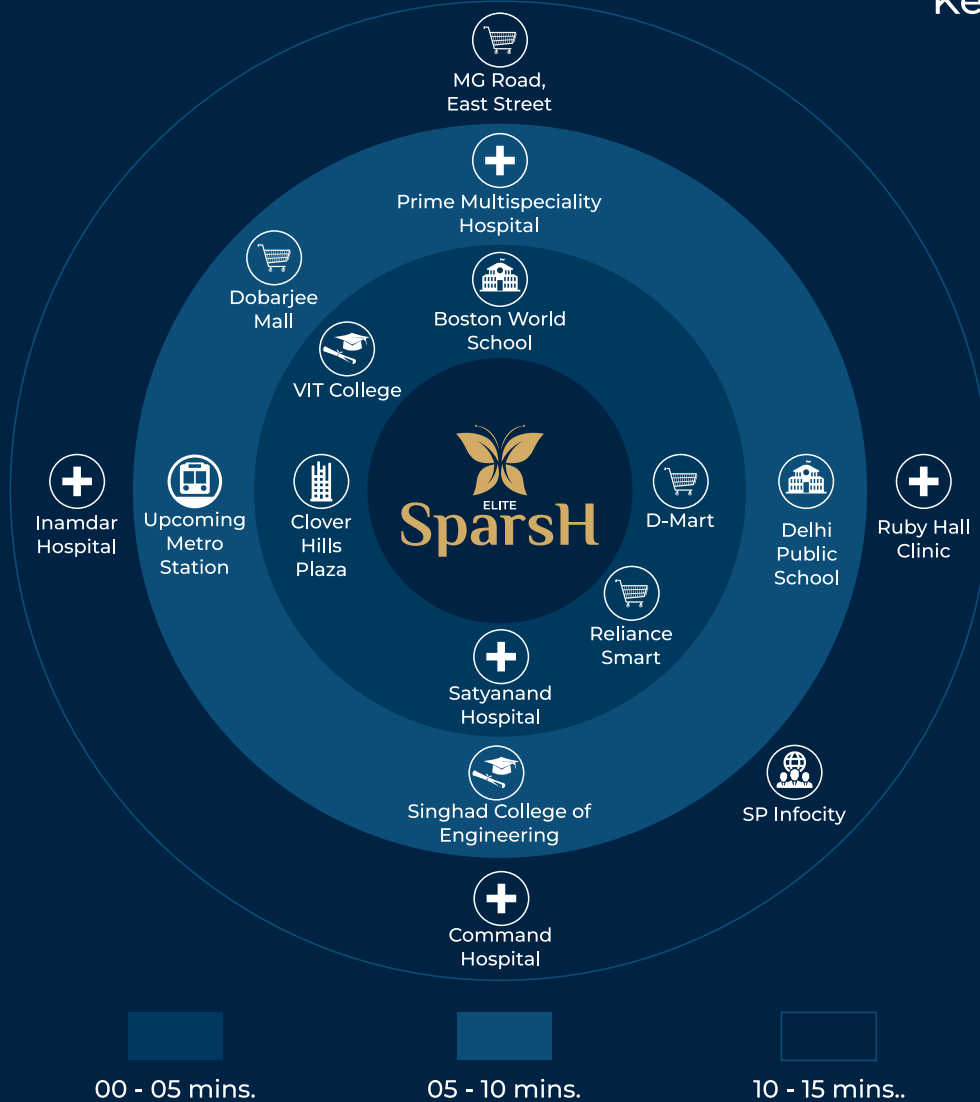
# SparsH

3 & 2 BHK SPACIOUS HOMES

It's a prestigious project that emanates luxury at every turn and opulence at each amenity. Located in a prime neighbourhood, the location seamlessly integrates top-notch infrastructure with premium lifestyle areas. A place where old values blend stylishly with new ideas, where wisdom coexists with innovation, and where joy finds a home.



### Key Distance



A Project by :



📍 S.no. 24/7C , Punydhm Ashram Road, Near by D-Mart, Kondhwa Bk., PUNE - 411 048 (MH) INDIA

📞 +91 8669 644 644 / 8669 622 622

🌐 [www.vprealties.com](http://www.vprealties.com)    ✉ [vprealtypune@gmail.com](mailto:vprealtypune@gmail.com)

Disclaimer: The images, contents depicted in this brochure are purely conceptual. The interior and exterior views may have been digitally altered. The firm reserves the rights to amend / modify the layout, floor plans, elevations, color schemes, specifications & amenities, etc., described and depicted herein without prior notice



# SparsH

3 & 2 BHK SPACIOUS HOMES

5

Fold

6

Fold

1



## SPECIFICATIONS

### STRUCTURE

- Earthquake resistant RCC framed Structure

### FLOORING / DADO TILES

- Toilet dado up to lintel level
- Anti-skid tiles flooring for toilet
- Vitrified tiles flooring
- Grand main entrance lobby
- Anti-skid tiles for dry terrace / balcony

### KITCHEN

- Kitchen platform in granite
- Stainless steel sink
- Ample electrical point in kitchen
- Dado up to lintel level

### TOILETS

- Designer dado
- Wall-hung WC & shower
- Wash basin with counters
- CP fittings of Jaquar / Hindware or equivalent
- Sanitary fixtures of American standard or equivalent

### DOORS

- Attractive main entrance door with quality fittings & fixtures
- All room door frames in wooden Red Meranti with decorative flush door finished with both side laminate
- Terrace door - Aluminium sliding 3 track doors with mosquito net

### WINDOWS

- Aluminium 3 track sliding windows with mosquito net
- Granite sills for all windows
- Safety grills in all windows

### ELECTRIFICATION

- Premium modular electrical switches
- Multi-stranded cables (polycab / KEI or equivalent)
- DB & MCB (Schneider or equivalent)

### PLASTER & PAINT

- Internal finish - Gypsum finish
- Internal paint - Acrylic
- External finish - Texture
- Exterior paint - Acrylic

### SECURITY & SAFETY

- Video door phone with Biometric finger print / card entry
- CCTV in campus & common area
- Professionally designed fire-fighting system

### ECO-FRIENDLY AMENITIES

- Rain-water harvesting

### OTHER SPECIAL FEATURES

- Power back-up for common area & lift
- Glass railings
- Stretcher lift